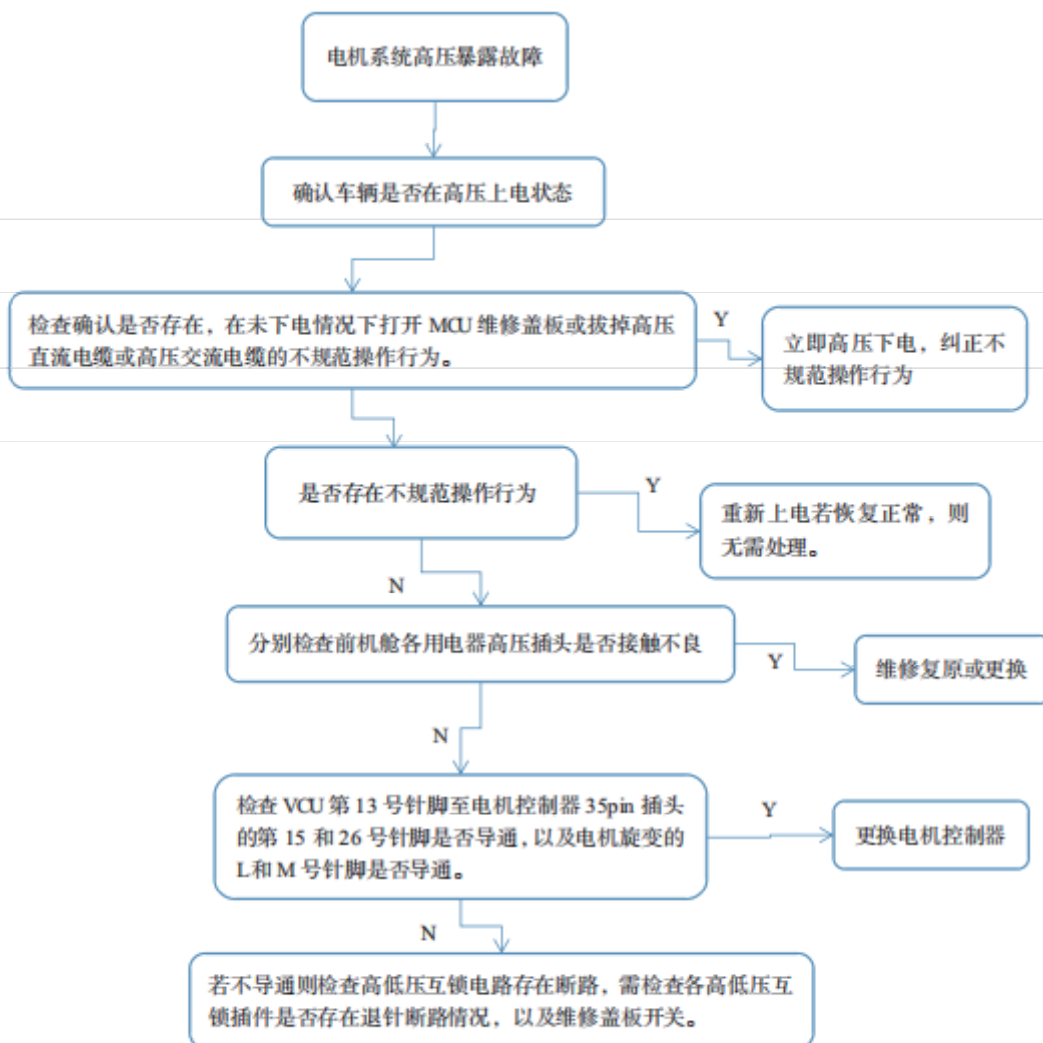
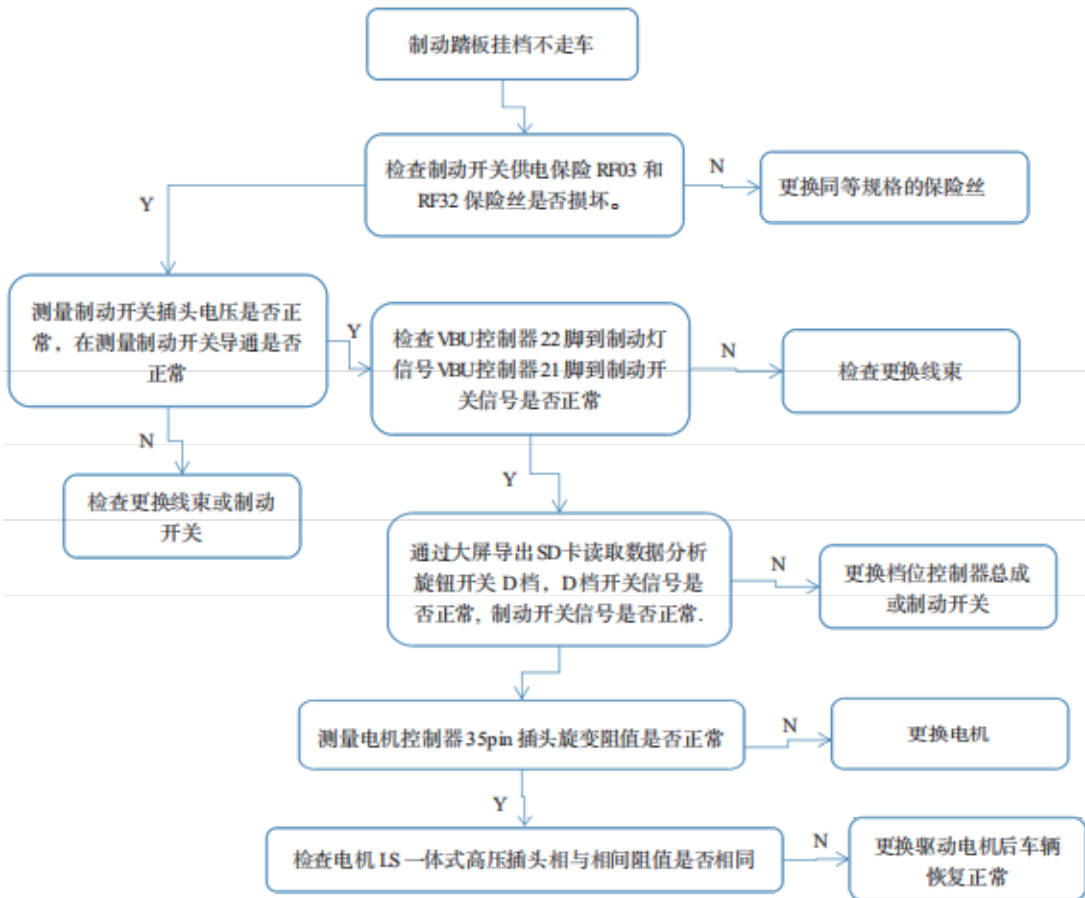


驱动电机故障

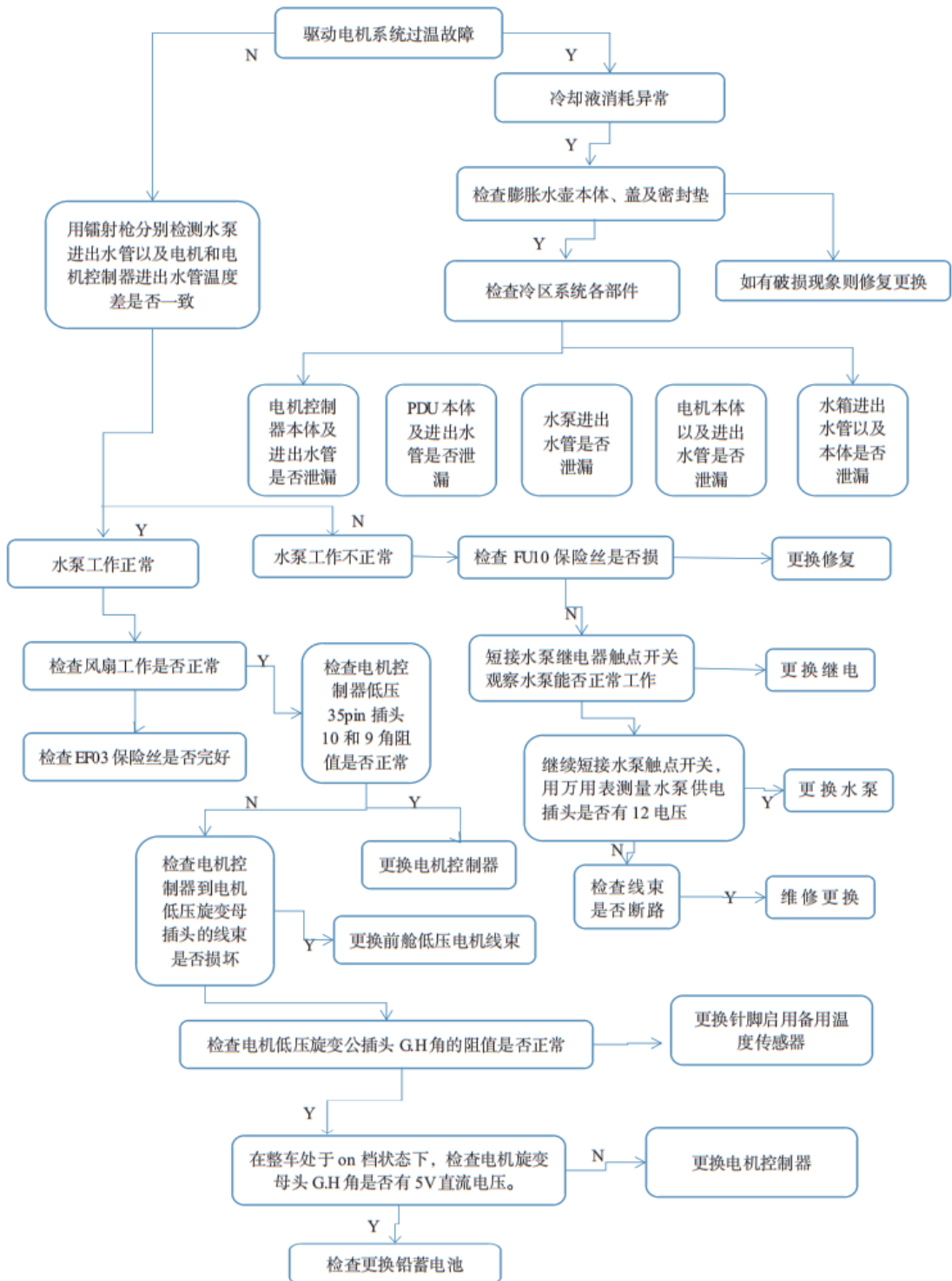
一、电机系统高压暴露故障



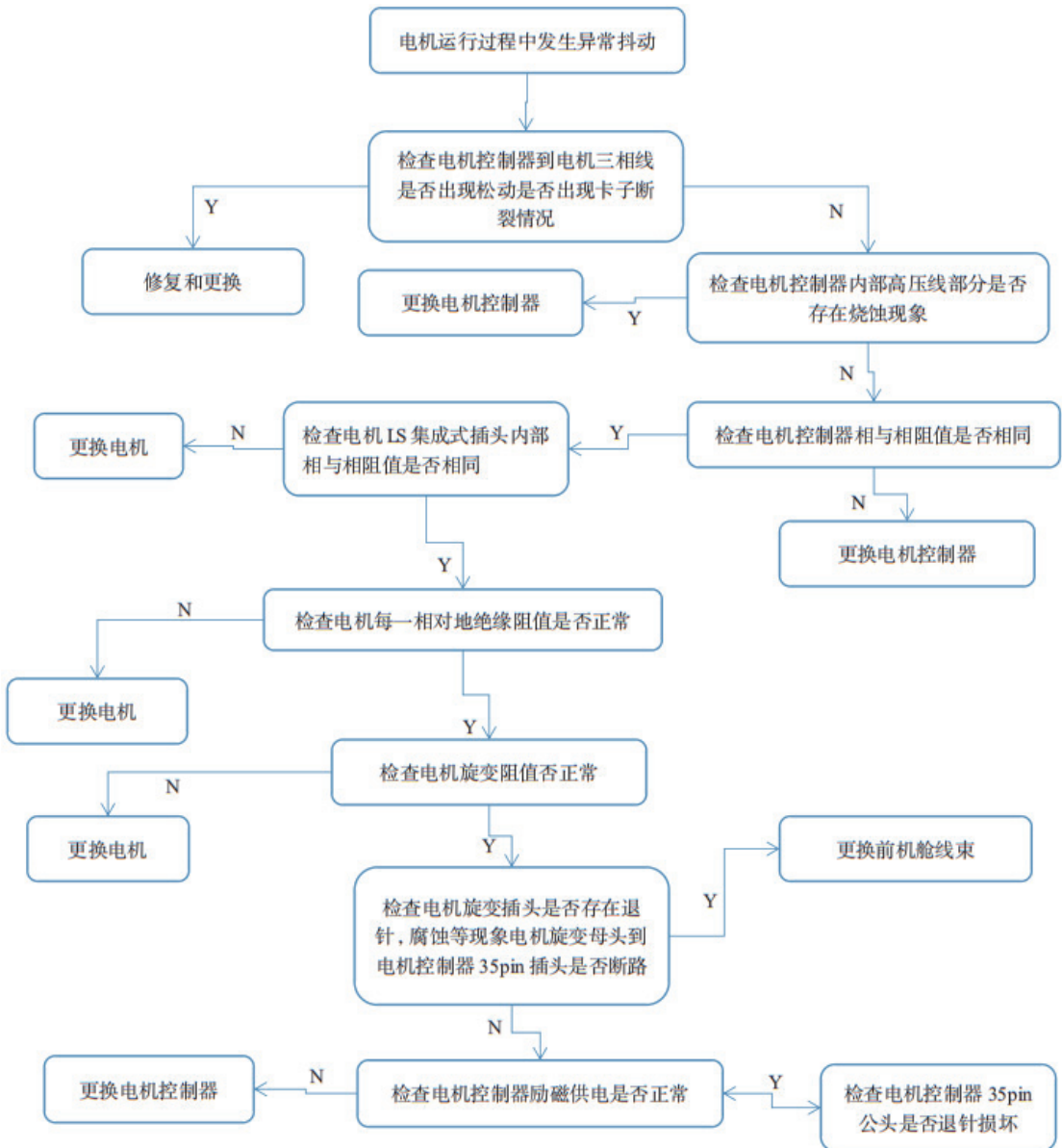
二、EV160-2016 款车型，车辆踩制动踏板挂档不走车



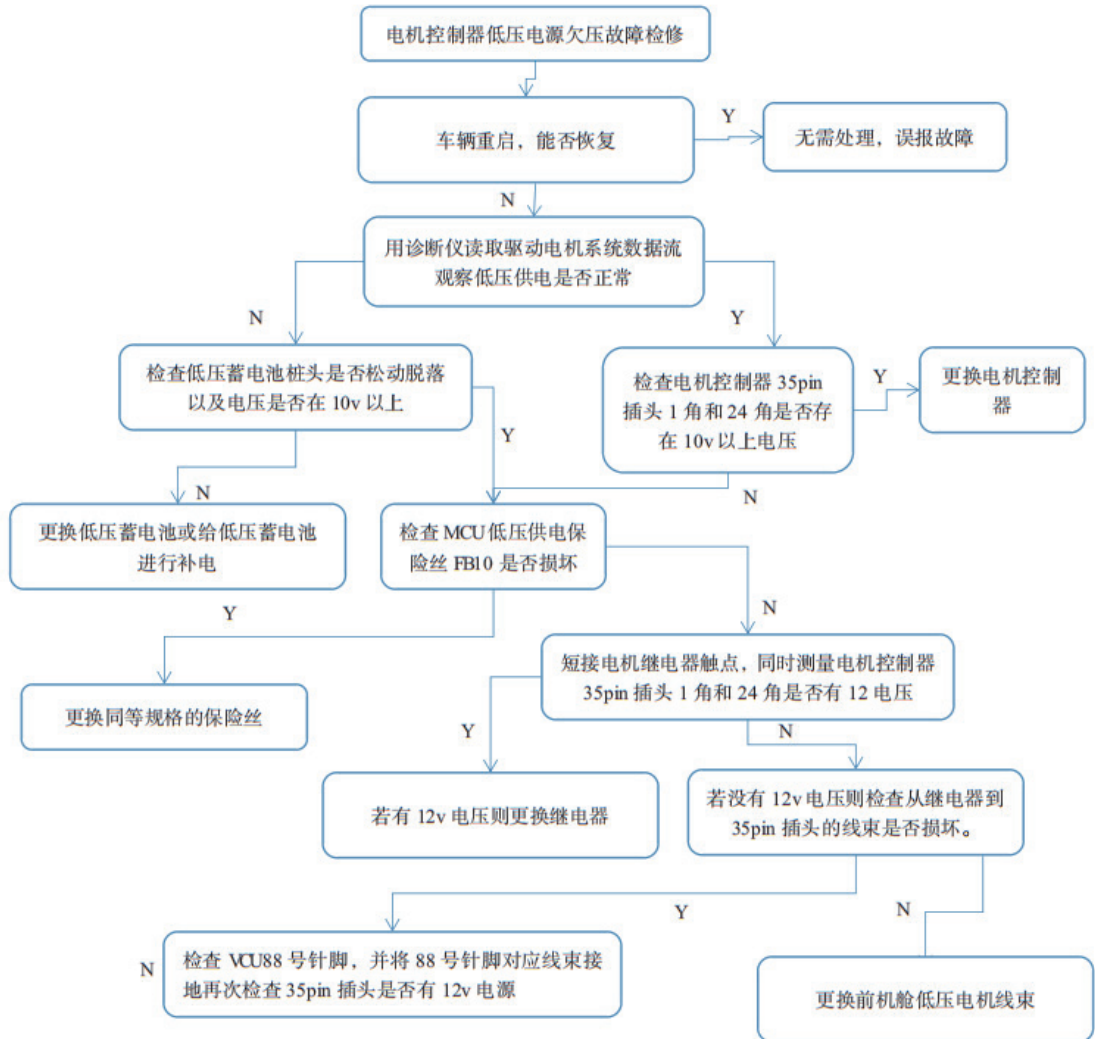
三、驱动电机过温故障检修



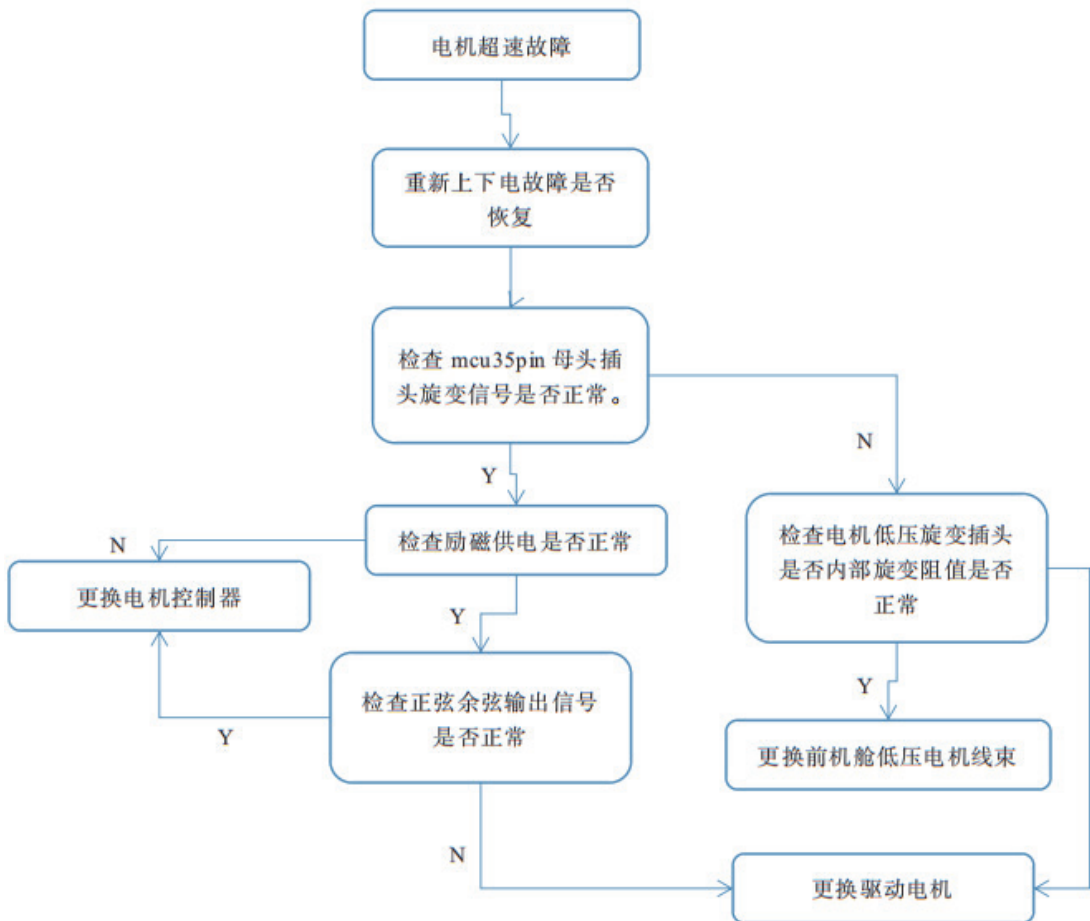
四、驱动电机运行抖动故障检修



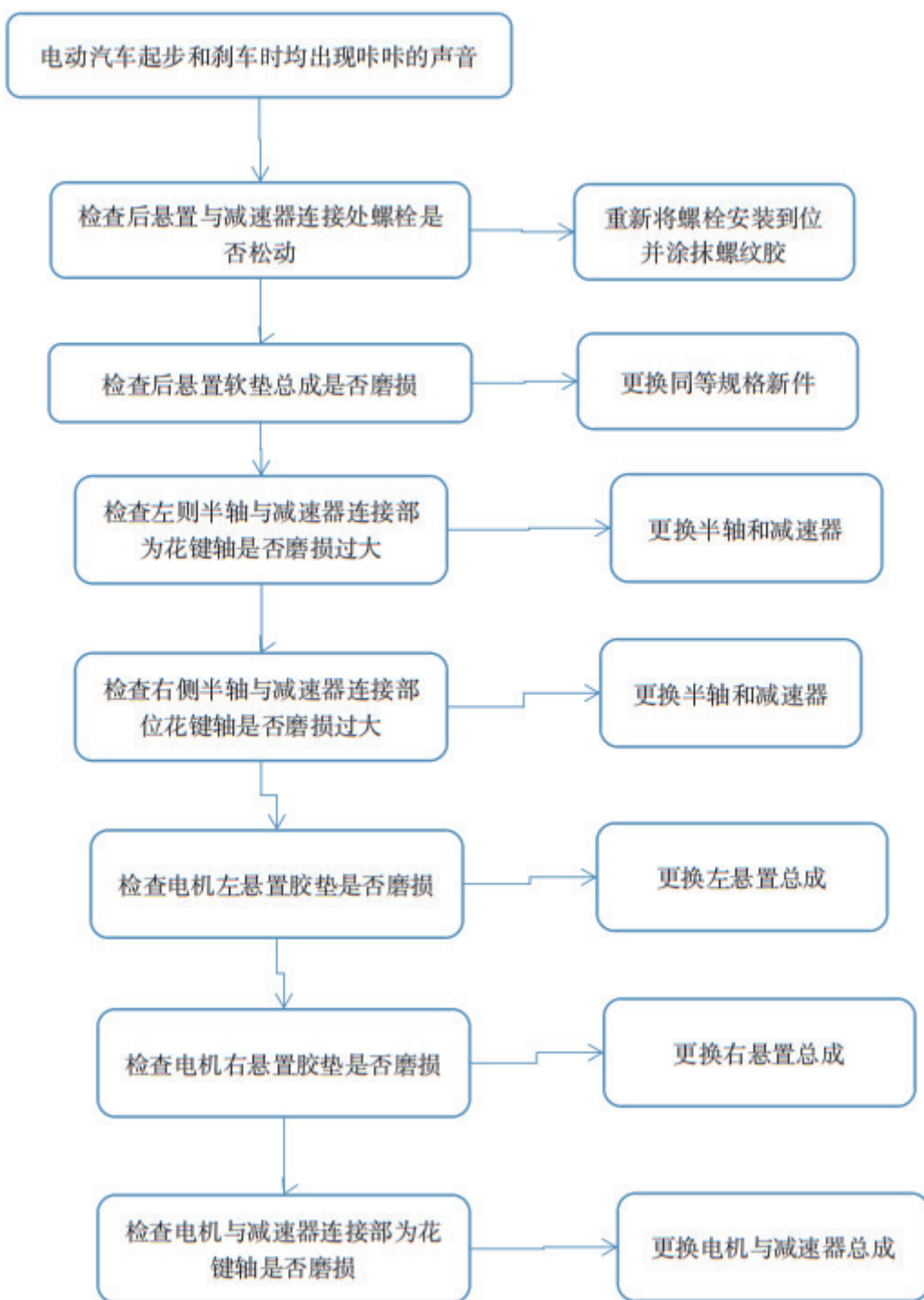
五、电机控制器低压电源欠电压故障检修



六、电机超速故障



七、车辆起步和制动时驱动电机异响故障检修



八、驱动电机不工作故障检修

